

APPENDIX A
MASON DAM PROJECT MAPS AND FIGURES

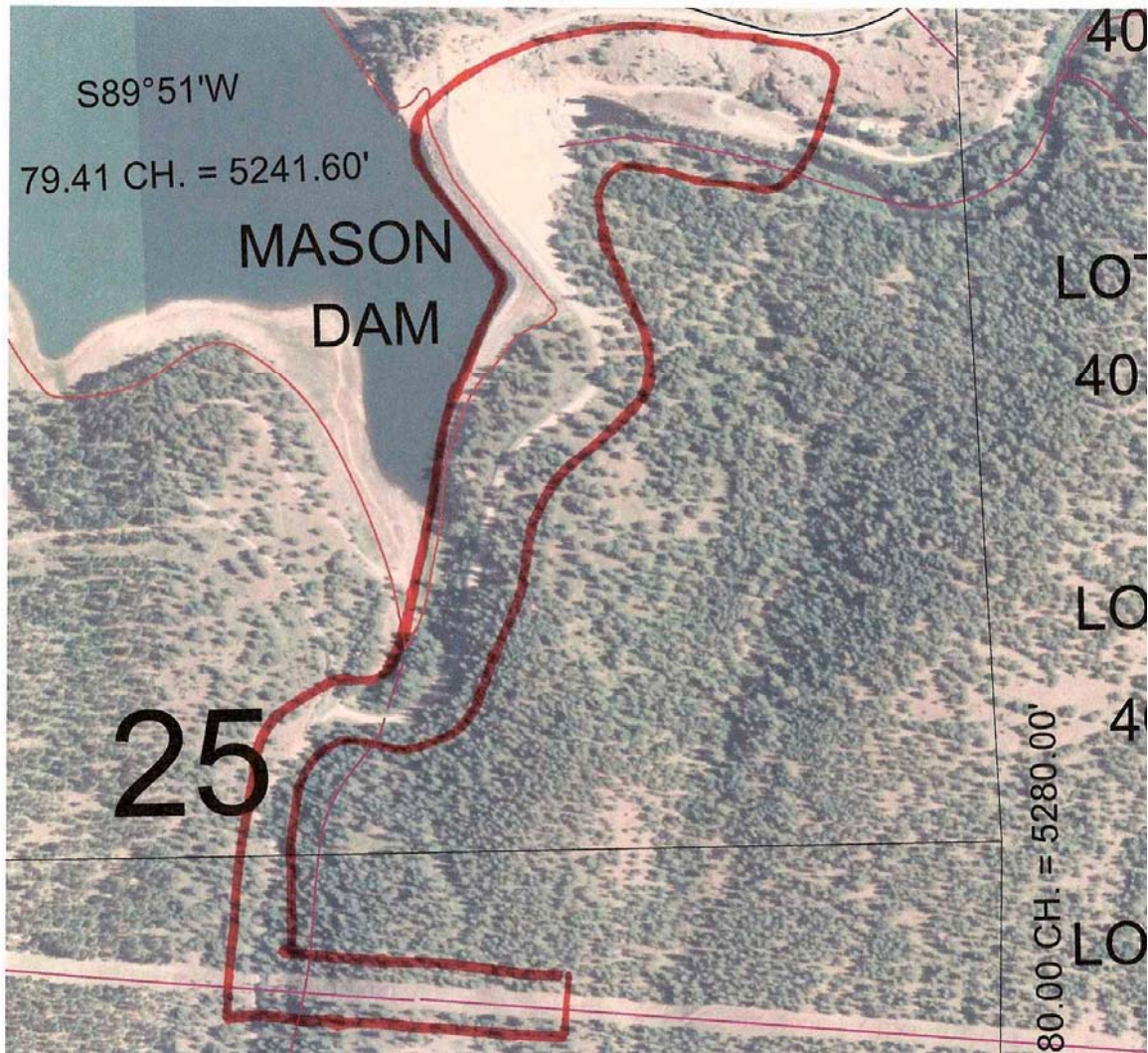


Figure 1. Mason Dam Study Area for TES Species as identified in Baker County (2006).

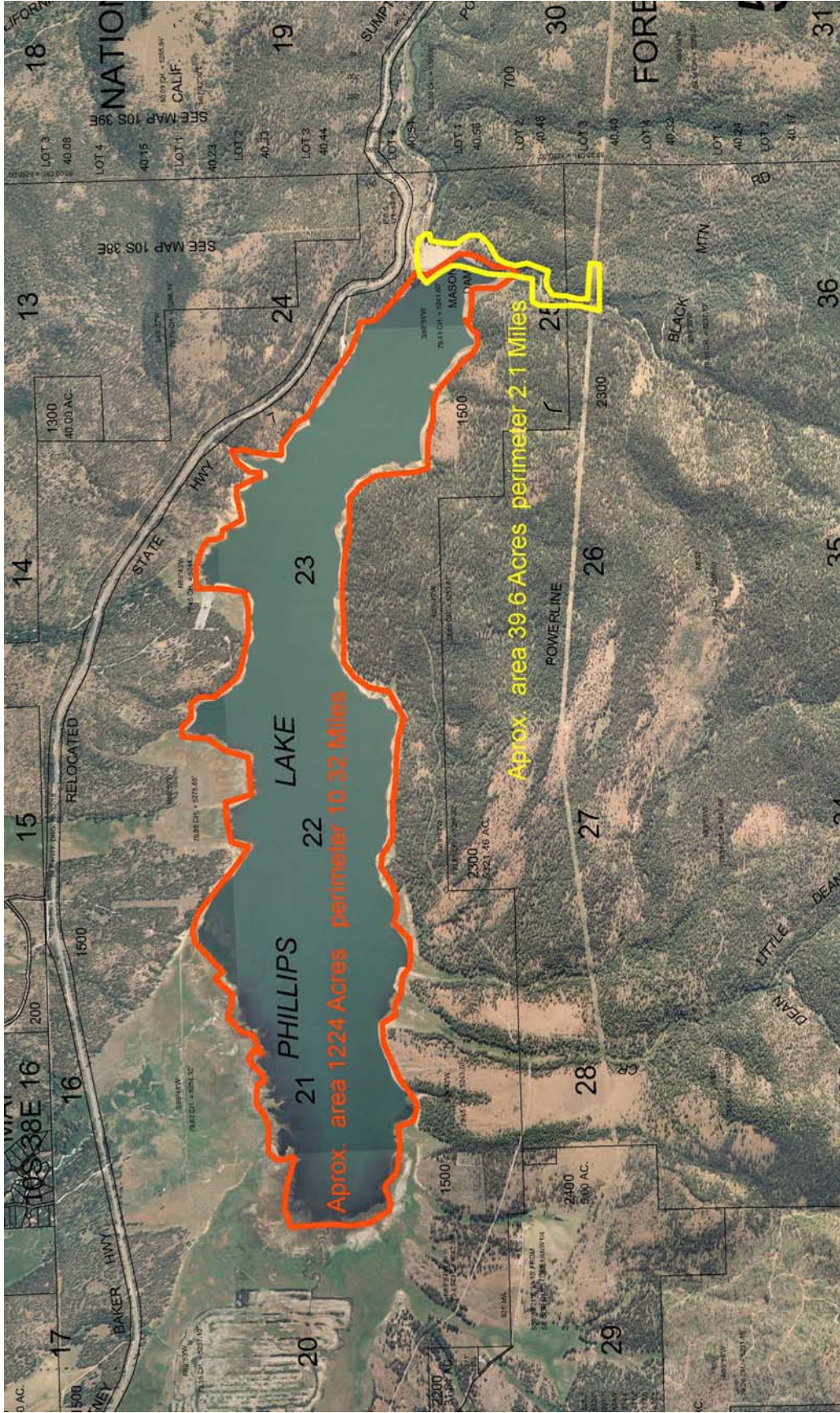


Figure 2. Mason Dam Project Study Area for TES Species and Additional Study Area for the Bald Eagle as identified in Baker County (2006).

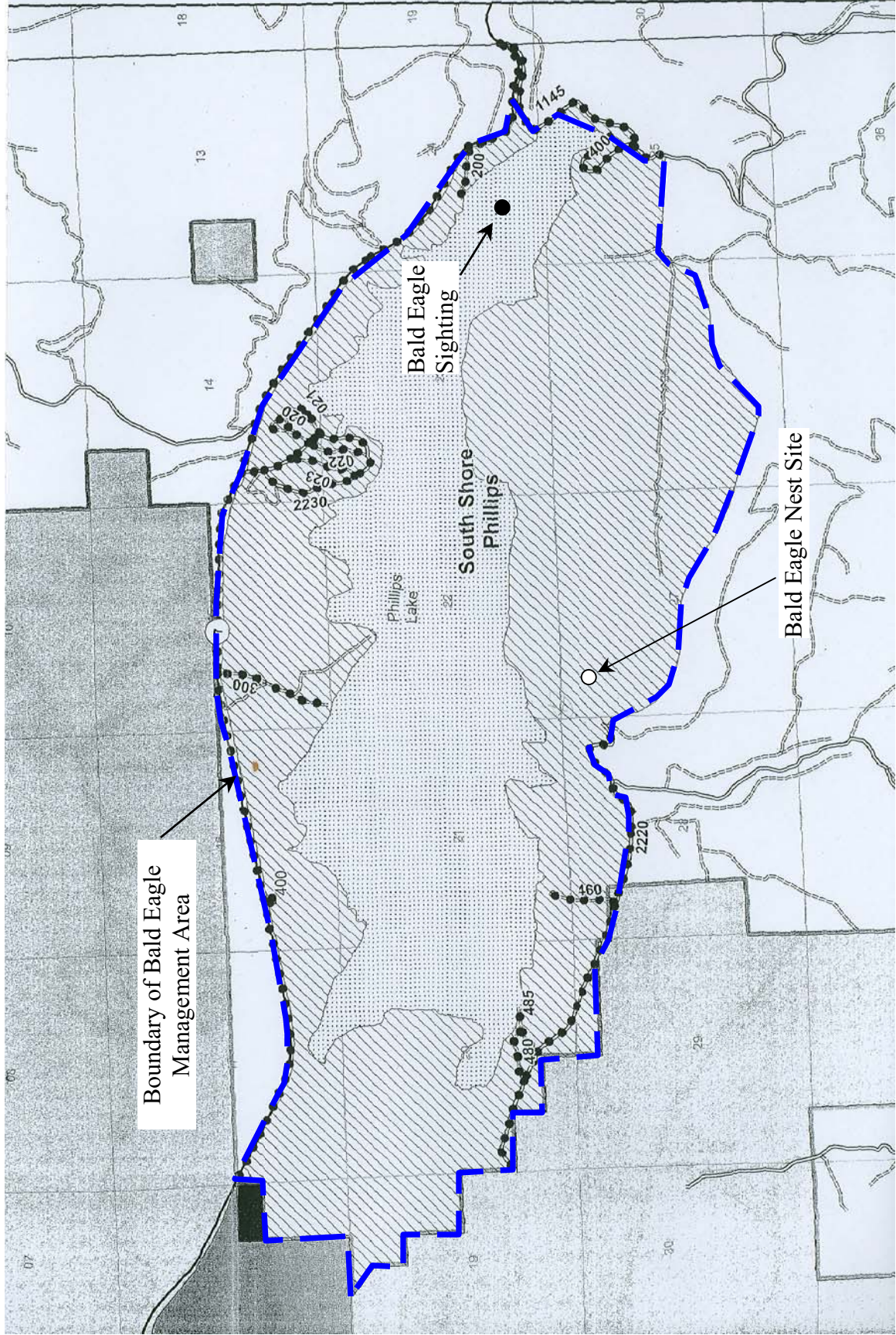


Figure 3a. Bald Eagle Nest Site and Boundaries of the BEMA at Phillips Lake. Location of Bald eagles observed foraging during the October surveys are also noted.

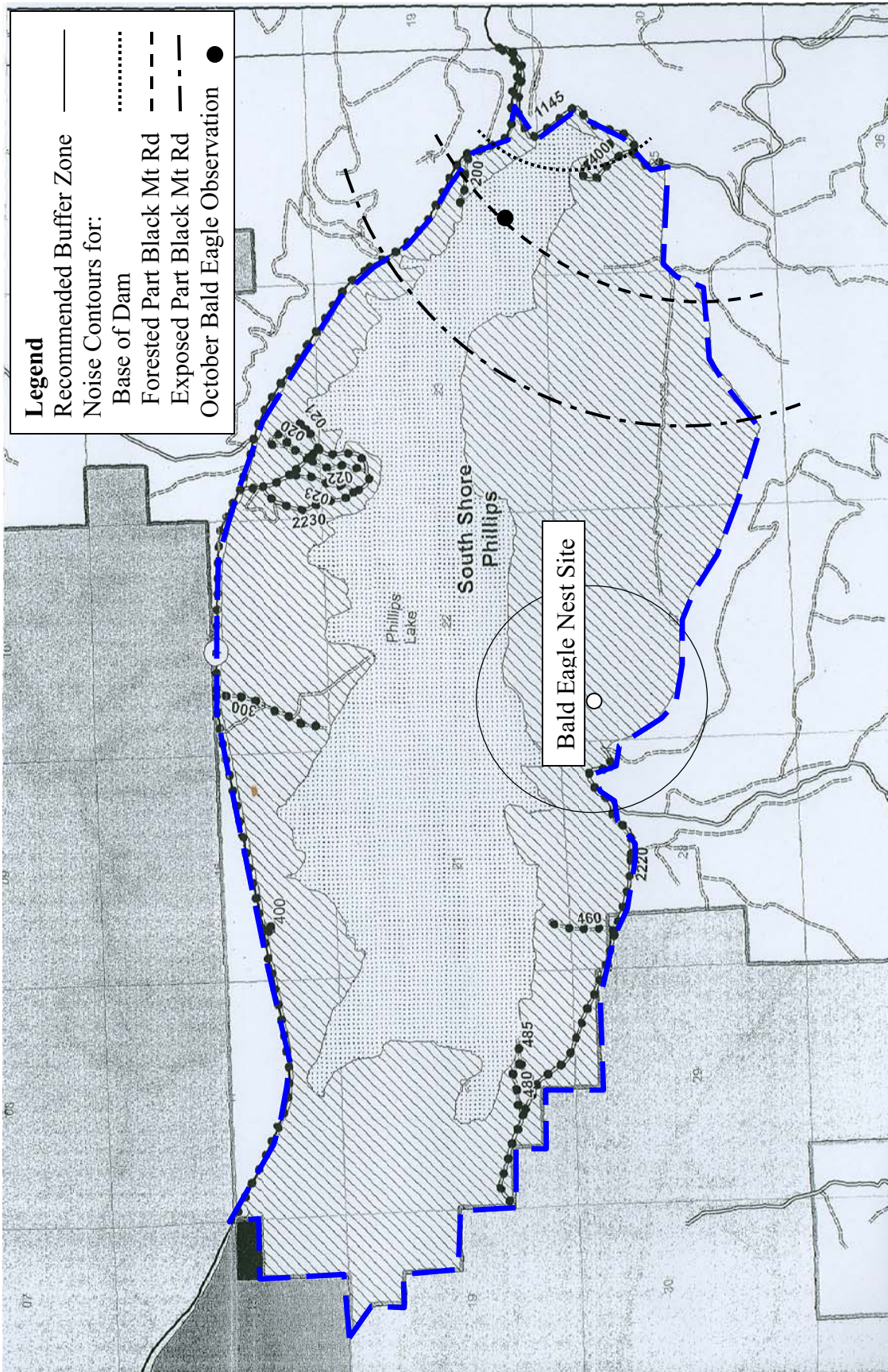


Figure 3b. Potential Construction Noise Impact Zones Within the BEMA in Relation to the Bald Eagle Nest Site. The literature-recommended up to 0.5 mile buffer zone (Anthony and Isaacs 1981) is also shown.

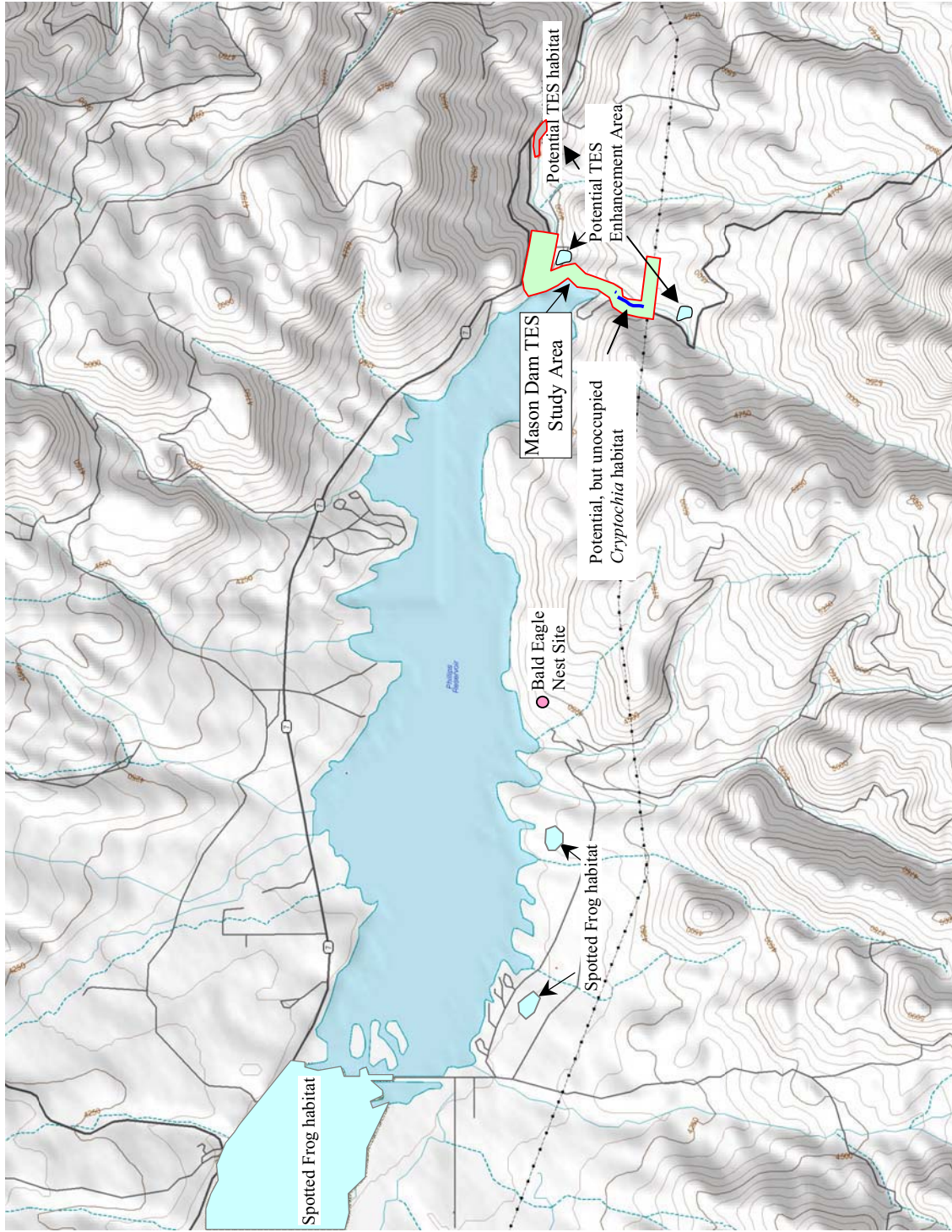


Figure 4. Known and Potential TES Habitat in the Vicinity of the Mason Dam Project. Potential TES habitat outside of the Study Area was not evaluated for occupancy in this report. See Figure 3 for BEMA boundaries and the indirect area of influence for the bald eagle.

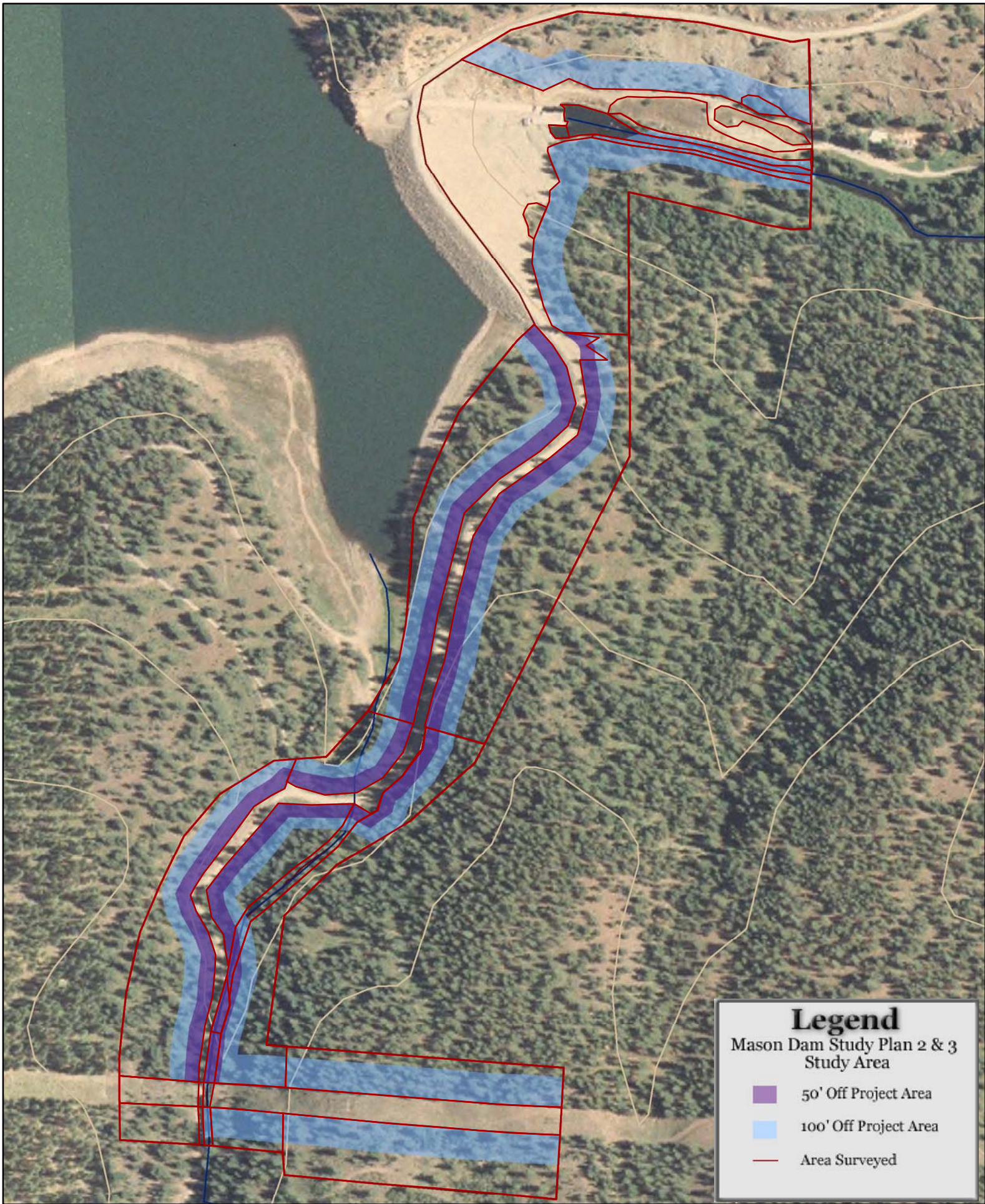


Figure 5a Mason Dam Study Plan 2 and 3 Project Boundary

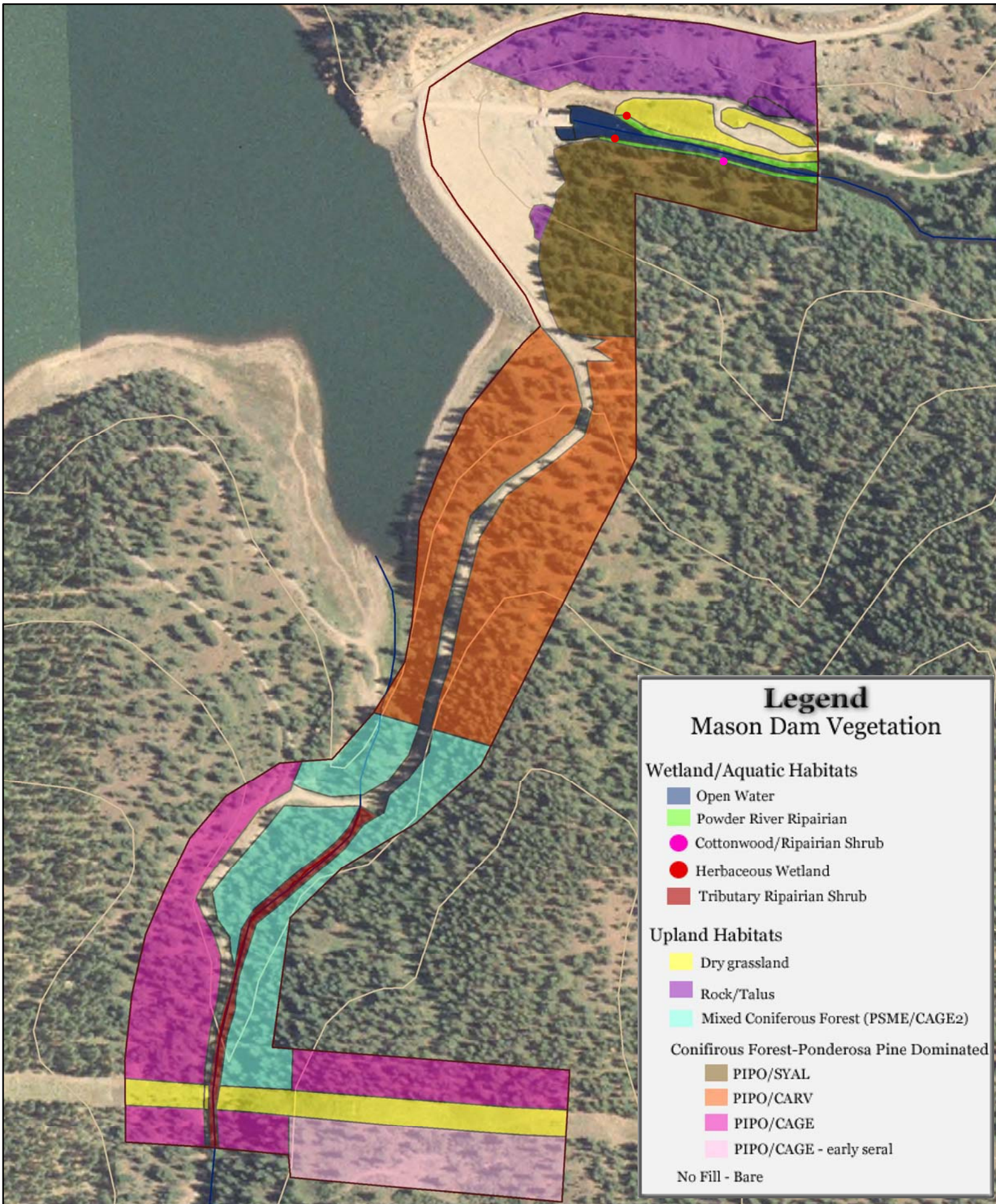


Figure 5b Mason Dam Vegetation

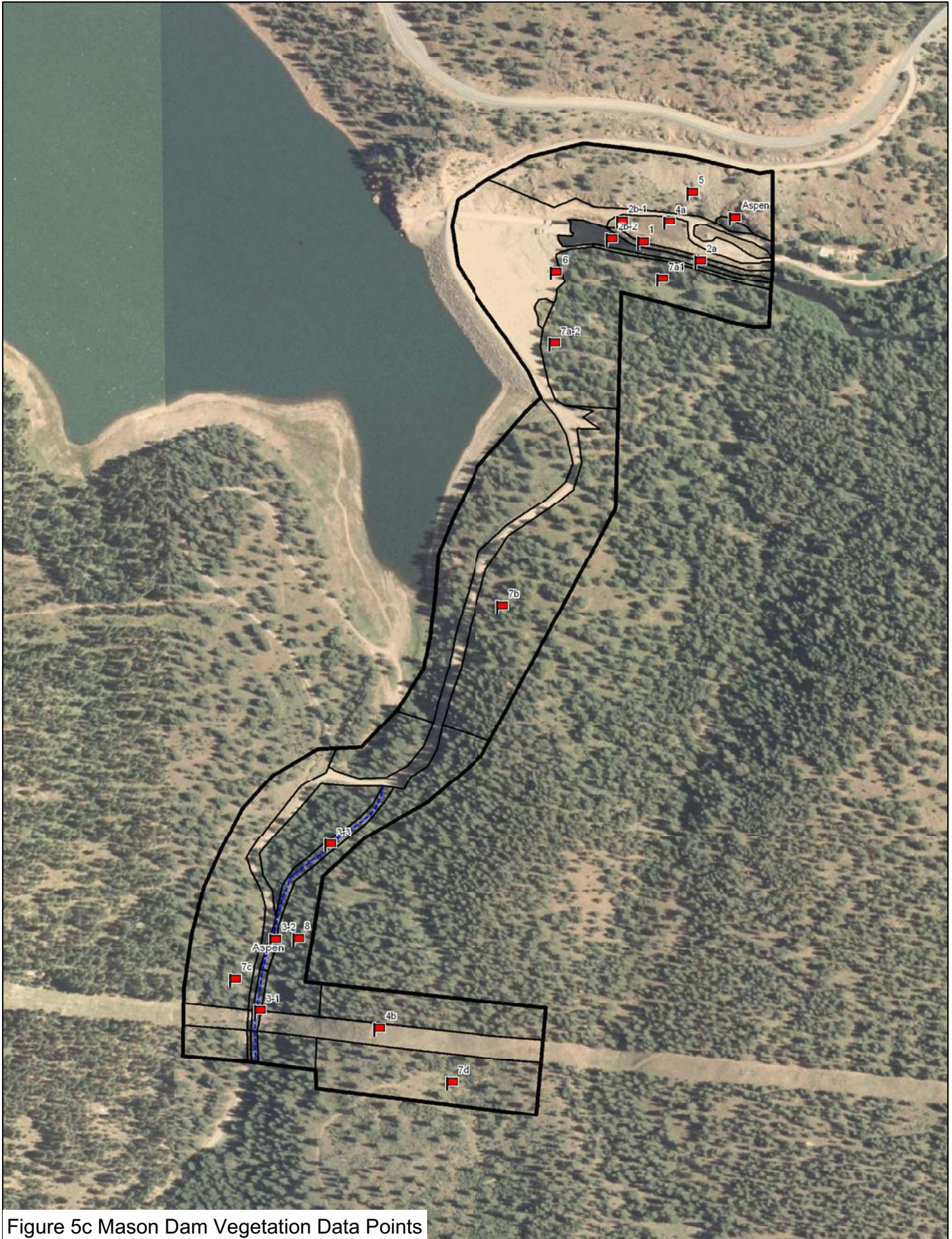
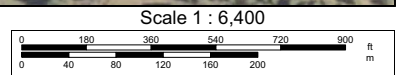


Figure 5c Mason Dam Vegetation Data Points

Data use subject to license.

© DeLorme. XMap® 5.2 GIS Editor.

www.delorme.com Mason Dam Hydroelectric Project
FERC No. P-12686



Combined Vegetation and TES assessment 15-0
Draft Report May 2009